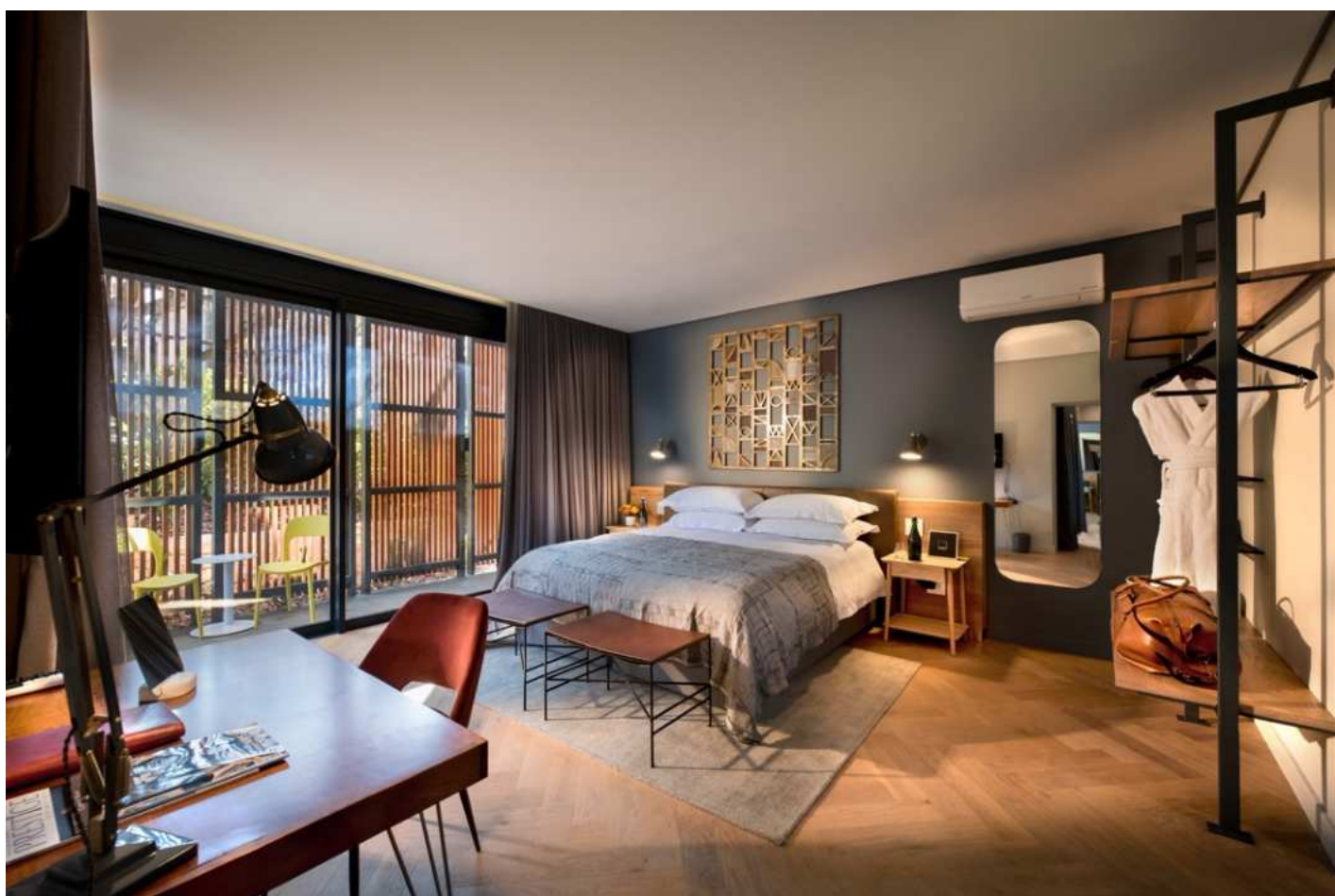


THE  
*peeck*  
BOUTIQUE HOTEL

FACTSHEET

REDEFINING SUSTAINABLE LUXURY IN JOHANNESBURG

Discover an urban sanctuary where "like home, only better" isn't just a tagline — it's our philosophy.



May 2026

Download the most up-to-date version of this document: [www.thepeech.co.za/d/qt5ZVX.pdf](http://www.thepeech.co.za/d/qt5ZVX.pdf)



## OUR VISION

Creating the most inspiring stay in Joburg through a blend of contemporary design, sustainable soul, and family-led hospitality.

## IN A NUTSHELL

Nestled in Johannesburg's prime Melrose neighbourhood, The Peech Hotel is an award-winning, family-run sanctuary where sustainable luxury meets "Afri-Chic" design. As a Fair Trade in Tourism certified leader, we blend contemporary style with the work of South Africa's finest craftspeople. Because the Peech family lives on-site, guests enjoy a rare level of discreet, personalised service that feels "just like, only better." From world-class dining at The Pot Luck Club to curated urban tours with special interest guides, we offer a conscious, boutique experience for the modern traveller. Experience the heart of Joburg at the city's most inspiring place to stay.

## OUR STORY

The story of The Peech Hotel began in 2002, when James Peech envisioned a 1950s family residence in Melrose as Johannesburg's first truly soulful boutique sanctuary. Opening in 2004, it has evolved into 32 guest rooms situated across a two-acre urban oasis. Today, James and Vicky Peech live on-site, leading a devoted team that treats every guest with the warmth of an old friend. Our "Afri-chic" aesthetic is a love letter to South African craftsmanship, marrying award-winning design with a pioneering commitment to Fair Trade Tourism and responsible urban hoteling.

## OUR LOCATION & SURROUNDS

Located in the prestigious suburb of Melrose, The Peech balances suburban tranquillity with urban energy. Directly over our doorstep are The James & Ethel Grey Park, the Padel & Social Club, and the charming Birdhaven Shops. We are next door to Planet Fitness and minutes from world-class golf courses. A 5-minute drive connects you to the art, shopping and high-end dining of Rosebank and Sandton, while easy motorway access leads to the CBD's artisan precincts like 44 Stanley and historic Constitution Hill.



## GUEST ACCOMMODATION

The Peech offers 32 contemporary and well-appointed rooms, each designed for functional comfort with unique views of our lush indigenous gardens.

### CLASSIC ROOMS: RM 1&2 (35m<sup>2</sup>)

Located in the heritage-status main house, these upstairs rooms retain 1950s architectural charm with modern amenities and wonderful views over the hotel's central gardens and pool area.

### CLASSIC ROOMS: RM 3-14 (45m<sup>2</sup>)

Recently overhauled these rooms are situated in garden pavilions featuring bespoke "Afri-Chic" interiors, private terraces/patios, and modern ensuite bathrooms with free-standing baths and showers.

### LUXURY ROOMS: RM 17-30 (50m<sup>2</sup>)

Striking the balance between bold urban architecture and soft, bespoke interiors, these rooms are designed for ultimate relaxation. Stackable glass doors allow natural light to flood the space and highlight oak herringbone floors. Bathrooms feature generous walk-in showers designed with water conservation in mind. Inter-leading options make our Luxury Rooms ideal for families.

### PEECH SUITES: RM 15&16 (60m<sup>2</sup>)

Peech Suites are designed for discerning travellers seeking the ultimate in space and luxury. Featuring generous open-plan living with elegant armchairs, a coffee table, and large sofa—creating a perfect retreat. Large bathrooms with deep soaking tub and shower. A honeymoon favourite.

### PEECH VILLA: RM 31&32 (90m<sup>2</sup>)

Our Luxury two-bedroom villa offers a private and contemporary sanctuary for families or groups. The master and second bedrooms are connected via central lounge area, complete with a dedicated refreshment station featuring a mini-bar and premium tea and coffee facilities. The Villa offers a secluded garden entrance with a shaded pergola.

## STANDARD IN ALL OUR ROOMS

High-speed 100mb+ WIFI, Smart TVs, Nespresso machines, individual AC, electronic safes, sustainable eco-luxury toiletries.

To ensure guest comfort, every guest room is equipped with:

- Individually controlled air-conditioning for summer
- Double-weight duvets with electric blankets in winter
- Plush bathrobes, slippers, and non-allergy bedding



- Integrated phone chargers and global plug adaptors
- In-room landline with free local calls
- Refreshment Stations, electric kettle, and well-stocked minibar fridge
- Writing desk and comfortable armchair or chaise lounge
- Hairdryer

## FAMILY FRIENDLY

The Peech Hotel welcomes guests of all ages, and offers a variety of tailored accommodation and services to ensure a seamless stay for families:

- Baby cots and linen for infants aged 0–2
- Professional Babysitting with advance request
- James & Ethel Grey Park, located directly across the road, offers multiple playgrounds and wide-open spaces for children to play safely
- A curated guide to family-friendly dining and activities in Joburg
- Nutritious and delicious kids' menu designed specifically for younger palates
- Plenty of outdoor seating and garden space for children to enjoy a bit of freedom in a safe, enclosed environment

## AWARD-WINNING DINING

### The Pot Luck Club JHB

Internationally acclaimed dining by Luke Dale-Roberts. Led by Chef Ebie du Toit (Luxe Awards' Hotel Restaurant of the Year 2026), Pot Luck Club offers globally-inspired small plates, curated local wine list and signature cocktails. An elevated dining experience. Advance reservations recommended.

### The Garden Restaurant

An exclusive residents-only sanctuary serving "modern classic" seasonal fare. Indoor and outdoor seating with log burning fireplace in cooler weather. An ideal space for families with younger diners. Features an afternoon Sundowner Bar and both A-La-Carte or curated Chef's Choice 3-course dinner menu options.

## FACILITIES & LEISURE

- Urban Oasis: 2 acres of private gardens with two swimming pools (family and lap pools).



- Wellness: Access to Planet Fitness (next door) and Padel & Social Club (across the road).
- Business: Private 16-seater boardroom and quiet library space.
- Security: 24-hour on-site security and secure private parking.

## RESPONSIBLE TOURISM

- Certified Ethics: Proudly Fair Trade in Tourism certified since 2010.
- Eco-Peech: Powered by Solar energy, utilizing heat pump water systems and probiotic waste facilities that turn food waste into garden fertilizer.
- Giving Back: Proud supporters of Little Eden and the global Pack for a Purpose initiative.

## CONTACT US

### THE PEECH HOTEL

Tel: +27 (0) 11 537 9797 / WhatsApp: +27 (0) 72 594 8116

[reservations@thepeech.co.za](mailto:reservations@thepeech.co.za)

[www.thepeech.co.za](http://www.thepeech.co.za)

[www.instagram.com/thepeechhotel](http://www.instagram.com/thepeechhotel)

[www.facebook.com/thepeechhotel](http://www.facebook.com/thepeechhotel)

Media: [lise@publicity.co.za](mailto:lise@publicity.co.za)

### THE POT LUCK CLUB JOBURG

Tel: +27 (0) 10 157 5757 / WhatsApp: +27 (0) 79 033 6830

[hello@thepotluckclubjhb.co.za](mailto:hello@thepotluckclubjhb.co.za)

[www.thepotluckclubjhb.co.za](http://www.thepotluckclubjhb.co.za)

[www.instagram.com/thepotluckclubjohannesburg](http://www.instagram.com/thepotluckclubjohannesburg)

[www.facebook.com/ThePotLuckClubJohannesburg](http://www.facebook.com/ThePotLuckClubJohannesburg)

Media: [lise@publicity.co.za](mailto:lise@publicity.co.za)